

PROTECT YOUR FACILITY
WITH THE ULTIMATE PERIMETER
PROTECTION SOLUTION



SR-1000

MAGOS 1KM RADAR - OPTIMAL SECURITY SOLUTION FOR LARGE PERIMETERS

ALL WEATHER, 24/7 WIDE AREA SURVEILLANCE

MAGOS OFFERS RADAR BASED, COST EFFECTIVE, STATE-OF-THE ART PERIMETER PROTECTION SOLUTIONS

- All-weather 24/7 Cost effective solution for smaller sites in need of high level security
- **One Radar covers over 200 acre** with wide area coverage: 100° (horizontal) x 30° (vertical) detection up to 1,000 m/3,280 ft
- Integrated with most VMS platforms
- Auto PTZ slew-to-cue integrated with most PTZ brands
- Lower initial investment and Reduced operating costs
- No moving parts and Wide Area coverage
- Install four **SR-1000** and one PTZ Camera for all weather cost effective 360° solution covering over 800 acres
- Edge processing driven extreme power & data efficiency – easy solar + wireless integration
- Easy installation & commissioning with **MASS** Wizard site builder
- Integrated with **MASS + AI** - minimal nuisance alarms with AI based target classification



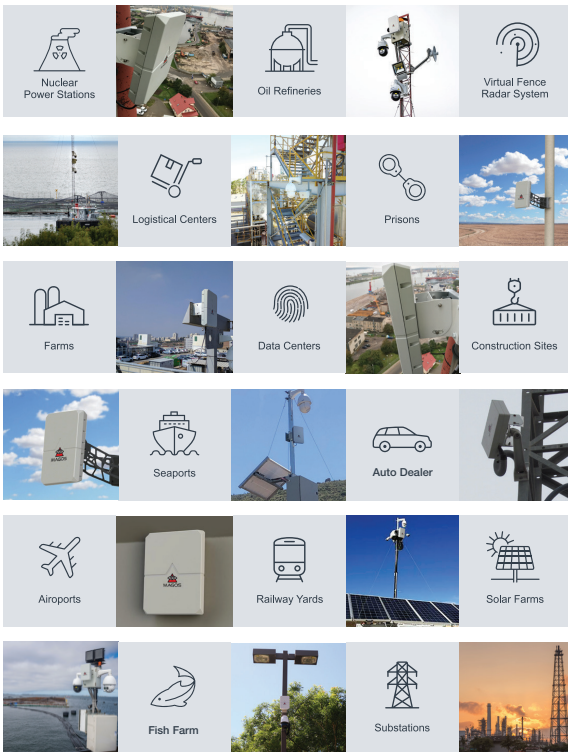
MAGOS SR-1000

The SR-1000 is Magos' long range addition to our advanced and cost effective perimeter protection detection solutions. The SR-1000 is most suited for large perimeters and areas that either have a wide area to cover continuously (Parking lots, Farms etc. or a very long perimeter (Airport, ports etc.).

By utilizing state of the art MIMO & Digital beam forming technology It covers an area of more than 800,000m²(>200 acres) with a detection range of up to 1000m for walker/ vehicle/boat, and yet consumes extremely low power (<5W). It boasts an ultra-high range accuracy giving it excellent performance in cluttered environments. Its small size, low power consumption and low weight make it simple to install and renders it ideal as a deployable system.



WIDE SPECTRUM OF APPLICATIONS



SPECIFICATIONS

Sensor type	High resolution MIMO digital beam-forming radar
Frequency	C-Band
Detection range	Up to 800m Human/1000m for Vehicle/Boat Drone detection - 200m
No moving parts	MTBF of 50,000 hours
Built in tracker	Extremely low required bandwidth
Scan rate	2 scans per second
Azimuth coverage	100°
Elevation coverage	30°
High Range accuracy	<1.0m
Azimuth accuracy	1°
Target detection speed	0.3 - 30 m/sec
Power	48V, <5W
System interface	Ethernet, POE - IEEE 802.3at Type 1 (802.3af) & Type 2
Dimensions	250(w) x 300(h) x 80(d) mm / 9.8(w) x 11.8(h) x 3.15(d) inc
Weight	3 Kg/6.6lb
Approvals	FCC, UL
Operating temperature	-40° - +85°C

