

PROTECT YOUR FACILITY
WITH THE ULTIMATE PERIMETER
PROTECTION SOLUTION



SR-500

OUR FLAGSHIP RADAR - HUNDREDS OF UNITS ALREADY
DEPLOYED WORLDWIDE

ALL WEATHER, 24/7 WIDE AREA SURVEILLANCE

MAGOS OFFERS RADAR BASED, COST EFFECTIVE, STATE-OF-THE ART PERIMETER PROTECTION SOLUTIONS

- All-weather 24/7 Cost effective solution for smaller sites in need of high level security
- 60 acre wide area coverage: 120° (horizontal) x 30° (vertical) detection up to 600 m/2,000 ft
- Integrated with most VMS platforms
- Auto PTZ slew-to-cue integrated with most PTZ brands
- Lower initial investment and Reduced operating costs – No moving parts and Wide Area coverage
- Install 4 **SR-500** and 1 PTZ Camera for all weather cost effective 360° solution covering over 120 acres
- Edge processing driven extreme power & data efficiency – easy solar + wireless integration
- Easy installation & commissioning with **MASS** Wizard site builder
- Integrated with **MASS+AI** - minimal nuisance alarms with AI based target classification



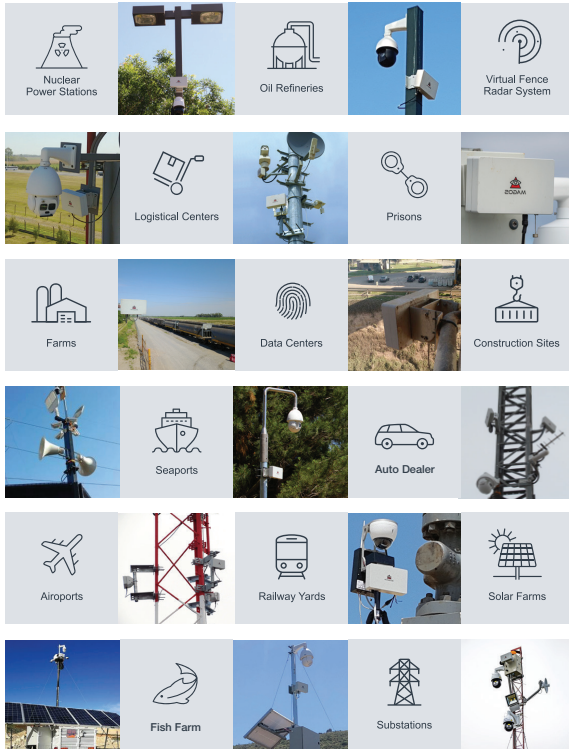
MAGOS SR-500

Magos' SR-500 is our most advanced radar and the most cost effective perimeter protection solution for both rural and more saturated environments, without compromising detection performance.

By utilizing state of the art MIMO & Digital beam forming technology It covers an area of more than 250,000m2(>61acres) with a detection range of up to 400m for walker and 600m for vehicle/boat, and yet consumes extremely low power (<3.5W) with a small form factor. It boasts an ultra-high range accuracy giving it excellent performance in cluttered environments. Its small size, low power consumption and low weight make it simple to install and renders it ideal as a deployable system.



WIDE SPECTRUM OF APPLICATIONS



SPECIFICATIONS

Sensor type	High resolution MIMO digital beam-forming radar
Frequency	C-Band
Detection range	Up to 100m Drone, 400m Human & 600m Vehicle/ Boat
No moving parts	MTBF of 50,000 hours
Built in tracker	Extremely low required bandwidth (<1kpbs)
Scan rate	2 scans per second
Azimuth coverage	120°
Elevation coverage	30°
High Range accuracy	<1.0m
Azimuth accuracy	1°
Target detection speed	0.3 - 30 m/sec
Power	48V, 3.5W
System interface	Ethernet, POE - IEEE 802.3at Type 1 (802.3af) & Type 2
Dimensions	250(w) x 150(h) x 59(d) mm / 9.8(w) x 5.8(h) x 2.3(d) inc
Weight	1.5 Kg / 3.3lb
Environmental	Full outdoor functionality, IP67, FCC & CE compliant
Approvals	FCC, UL
Operating temperature	-40° - +85°C

